


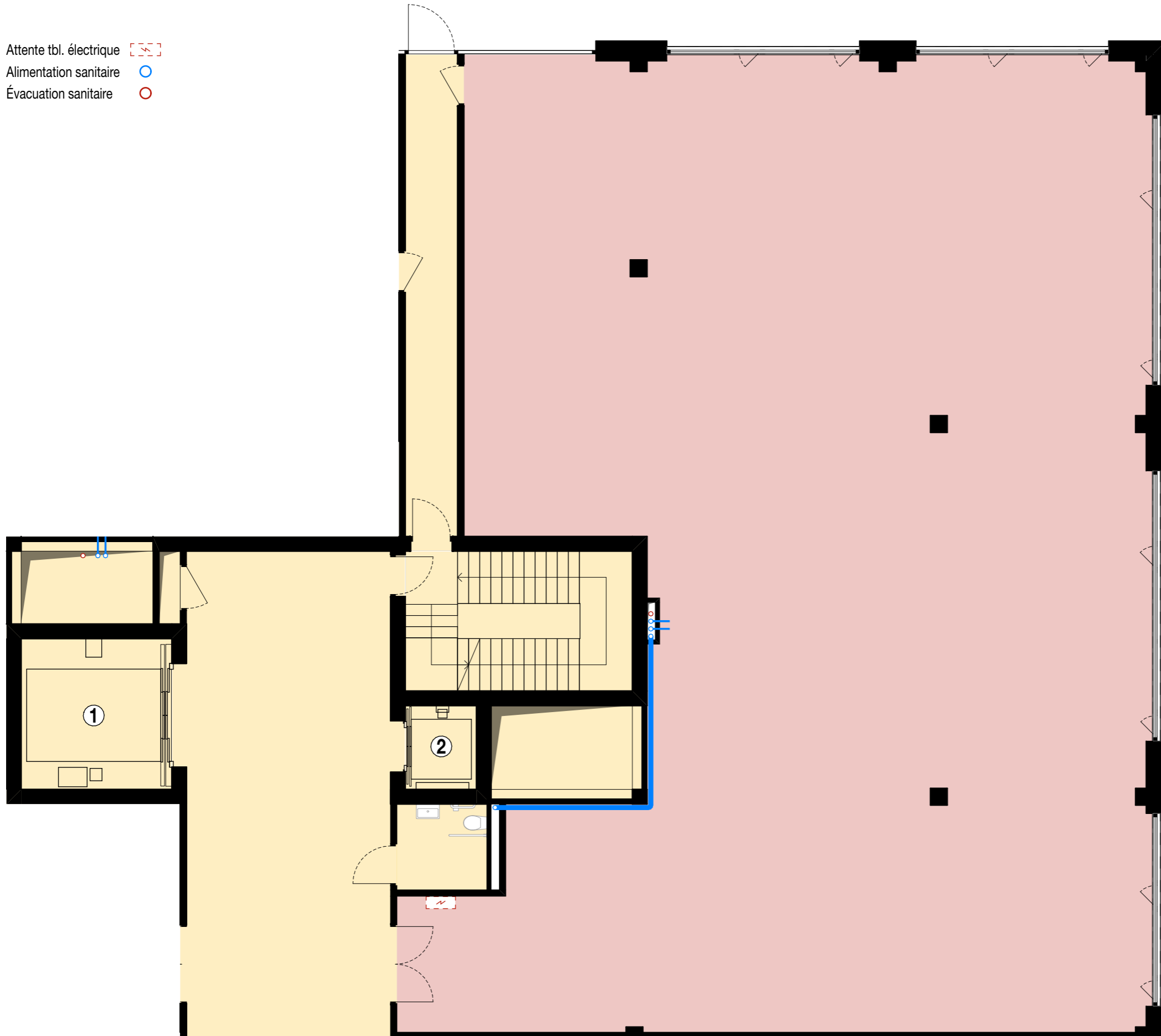


REZ - LOT 2.06





- Attente tbl. électrique 
- Alimentation sanitaire 
- Évacuation sanitaire 



ORIX

Rue de la Bergère 10 Satigny CH-1242

AFFECTATION

-  Surface Artisanat / Industriel
-  Surface Administratif
-  Dégagement / Circulation
-  Terrasse accessible

- ① MCharge - 4T - l.240 p.295 h.250 / 0.8ms
- ② Ascenseur - 0.8T - l.130 p.140 h.230 / 1.6ms

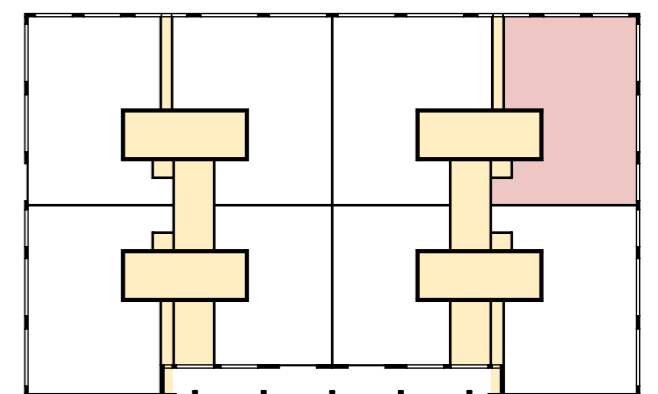
INFORMATIONS

Charge Utile	15 kN/m ²
Charge Permanente	2 kN/m ²
Hauteur sous dalle brute	462 cm
Hauteur utile	412 cm*

* Hauteurs utiles variables selon éventuelle technique bâtiment

SURFACES

LOT 2.06	
Surface Lot PPE	378.0 m ²
Surface Terrasse PPE	-
Surface Lot nette	356.1 m ²
Surface Terrasse Nette	-



Plan et surfaces non contractuels

16.03.26



LAM Architectes SA
Ch. de Montolivet 19a
CH - 1006 Lausanne

