


# REZ - LOT 2.04




# ORIX

Rue de la Bergère 10 Satigny CH-1242

## AFFECTATION

 Surface Artisanat / Industriel

 Surface Administratif

 Dégagement / Circulation

 Terrasse accessible

① MCharge - 4T - l.240 p.295 h.250 / 0.8ms

② Ascenseur - 0.8T - l.130 p.140 h.230 / 1.6ms

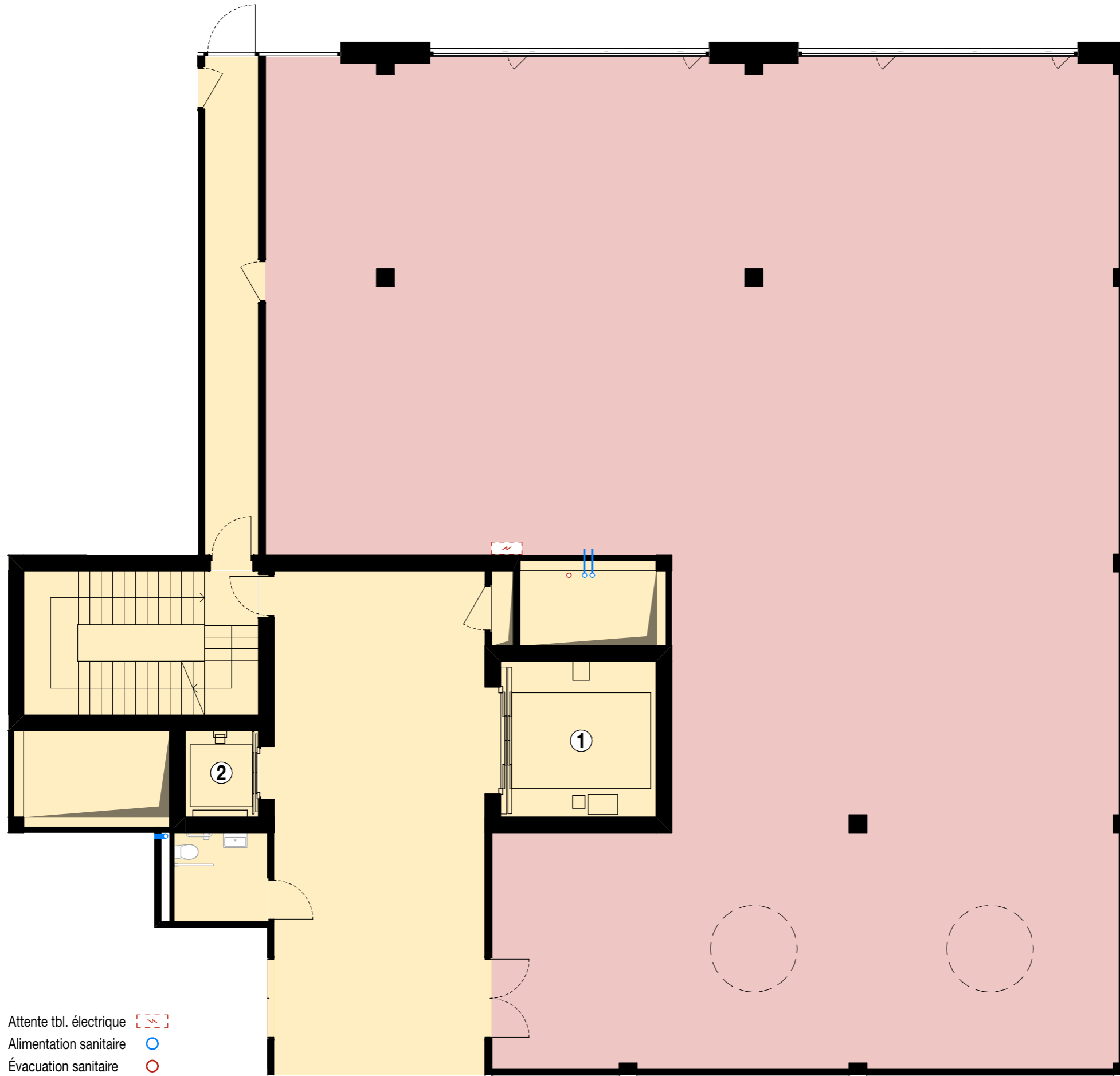
## INFORMATIONS




Charge Utile	15 kN/m <sup>2</sup>
Charge Permanente	2 kN/m <sup>2</sup>
Hauteur sous dalle brute	462 cm
Hauteur utile	412 cm*

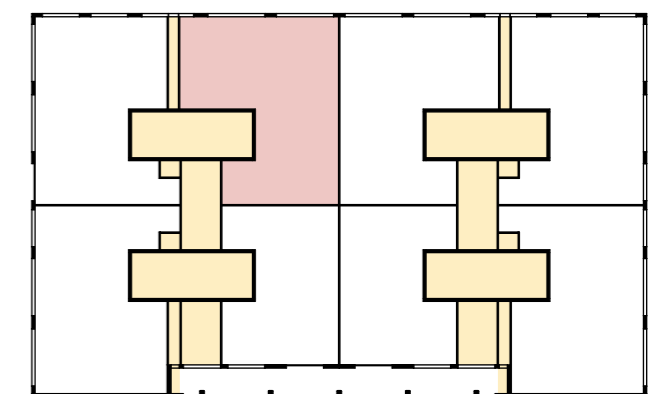
\* Hauteurs utiles variables selon éventuelle technique bâtiment

## SURFACES

LOT 2.04	
Surface Lot PPE	386.0 m <sup>2</sup>
Surface Terrasse PPE	-
Surface Lot nette	369.8 m <sup>2</sup>
Surface Terrasse Nette	-



Attente tbl. électrique   
 Alimentation sanitaire   
 Évacuation sanitaire 



Plan et surfaces non contractuels

16.03.26



LAM Architectes SA  
 Ch. de Montolivet 19a  
 CH - 1006 Lausanne

